

Catalyst

Just the facts.... Measuring impact.
2013 PROGRESS REPORT P.2/3

Where are they now? P. 3

Save the Date!! ...back cover



2013 Progress Report!

Four (4) 10,000 litre water tanks at four primary schools constructed!



water



2013

finance



977 women from 80 villages have received funds under the revolving loan scheme!



Farm inputs & improved seeds like sweet potatoes and soya beans are now being delivered to villages!



1,715 have been reached through sports and drama!



5,539 students trained in reproductive health and HIV health



300 more women have been trained in finance & records!



94 more school teachers trained as HIV/AIDS educators



Another 1,392 reached through sanitation and hygiene



A community-accessed borehole at the Community Development Center (CDC) in Lyantonde town and serves an average 150 people per day!

47 farmers from 5 villages were identified and selected to attend a 4 day training in modern farming methods and technologies, kitchen gardening and nutrition



SSF resumed operations in MALAWI working with women groups to provide start-up capital for income generating businesses and improved inputs and methods for agriculture including irrigation!



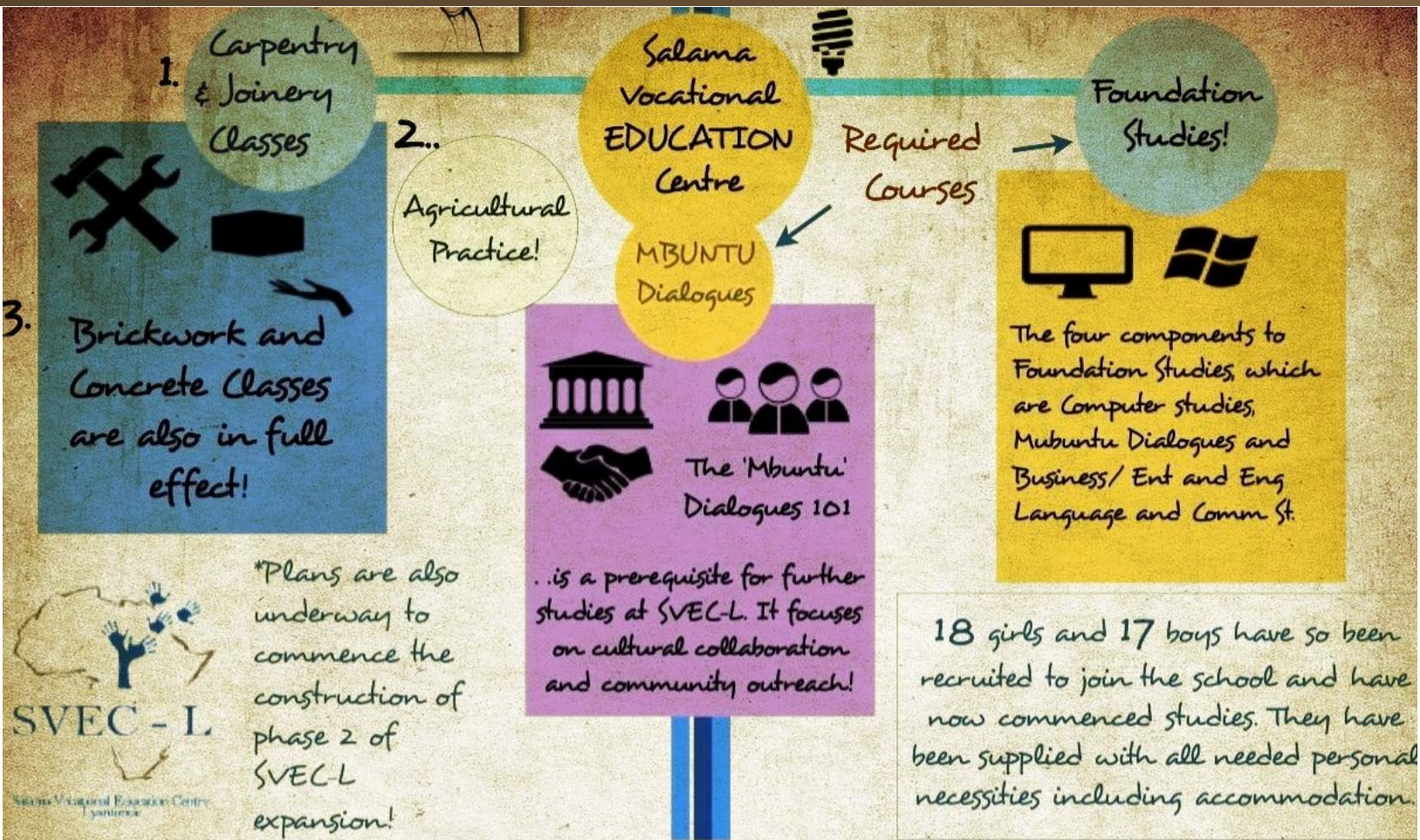
This year, 134 goats have been distributed to 67 families!

DATES TO REMEMBER....

- July 11 World Population Day
- Aug. 9 International Day of the World's Indigenous People
- Aug. 12 International Youth Day
- Sept. 8 International Literacy Day
- Oct. 5 Ride for Refuge - Ride Day!
Organize a team to ride for Salama SHIELD Foundation
Details through email at luke@salamashield.org OR rideforrefuge.org
- Oct. 17 'Mindfully Mbuntu' Gala Event—tickets go on sale Aug. 1st



2013 Progress Report!

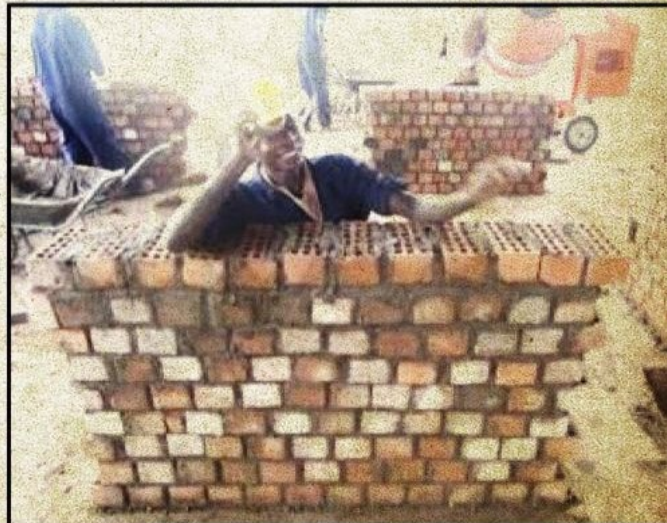


18 girls and 17 boys have so been recruited to join the school and have now commenced studies. They have been supplied with all needed personal necessities including accommodation.

WHERE ARE THEY NOW?

Last Issue, we introduced you to the stories of Habikiri Piuss (pictured right), and Janifer Namara (pictured bottom left) – new students at the Salama Vocational Education Centre – Lyantonde, and vulnerable youth from the community. Three months into the school year, these students and 33 other like them, have made significant progress!

The talents being awakened and learned are truly an inspiration.





Save The Date !

Thursday October 17, 2013 - Hacienda Sarria, Kitchener

Tickets go on sale August 1st, 2013 – www.salamashield.org

Sponsorship Packages available! Contact info@salamashield.org

Join the SALAMA SHIELD FOUNDATION at the Second Annual Gala!

Thursday, Oct 17, 2013

The Salama Shield Foundation (SSF) is coming off of its most innovative year to date. This year's event – entitled *Mindfully Mbuntu* – is derived from the Mbuntu Dialogues, which is a required course at the newly opened Salama Vocational Education Centre in Lyantonde (SVEC-L). *Mbuntu* means "I am who I am because of who we all are together in community", and governs the moral imperative for SSF's essential platform for development: the transferring of culturally- collaborative genetics which is the foundation for achieving something sustainable.

Amidst all of this, the Salama Shield Foundation is coming up to its 20th year anniversary! Through the ethnographic understandings of how development has worked, where it is headed, and the way forward as a charitable entity in the 21st century, SSF is pleased to announce this year's keynote speaker as John Bromley. Charitable guru, entrepreneur and speaker at TEDx Vancouver, John hopes to bring light to donor giving in this new age, the processes behind "why we give", but also the inspiration behind his upcoming film "Walking on Glass" (Benefic Productions, Safari Films). The film portrays the innovative thinking of Salama Shield Foundation's Founding Director, Dr. Dennis Willms, and his constant efforts to revitalize development, in what has been over two decades of success dedicated to everything from HIV/AIDS preventive interventions to traditional healing -- while focusing on the holistic and conceptual practices that exemplify being *Mindfully Mbuntu*.

Building on the favorites from the previous year, this year's event includes access to a courtyard of culturally compelling stories from the rural areas in Uganda and Malawi, a marketplace of imported art from some of East Africa's up and coming artists, a silent auction boasting East African material culture, a live jazz band, and a multi-course meal prepared by locally renowned chefs. Ticket options vary from those who want to enjoy the sit-down meal, to those who want to simply gain insight from this year's speaker and mill about in the African marketplace while enjoying the sounds of *Deacons of Jazz* band (ticket information below).

It is an interesting time for charitable organizations; many create partnerships with the public or private sector, while others continue fundraising and grant-writing to provide for their cause and purpose. Over the years, SSF has been privileged to have various donors to keep its dreams alive, and is now looking to revitalize its place in the newly saturated non-profit sector by moving beyond outdated terminology, in an attempt to renew a spark for giving, while providing donors with a worthwhile organization to trust and deliver.

Join us for this year's Gala Event, "Mindfully Mbuntu". Tickets available August 1st, 2013.

Watch www.salamashield.org for details.

Doing Development Differently

Salama SHIELD Foundation, P.O. Box 407, Plattsville, Ontario N0J 1S0

Phone: (519) 696-3686 Fax: (519) 696-3727 Web: salamashield.org